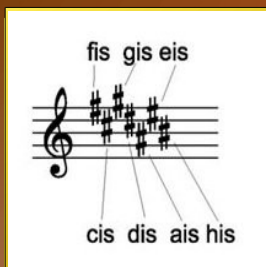


DUROVÉ STUPNICE S KRÍŽIKMI



C dur (základná durová stupnica)



G dur 1# (fis)

D dur 2# (fis, cis)

A dur 3# (fis, cis, gis)

E dur 4# (fis, cis, gis, dis)

H dur 5# (fis, cis, gis, dis, ais)

Fis dur 6# (fis, cis, gis, dis, ais, eis)

Cis dur 7# (fis, cis, gis, dis, ais, eis, his)

DUROVÉ STUPNICE S BÉČKAMI



C dur

F dur 1b (b)

B dur 2b (b, es)

Es dur 3b (b, es, as)

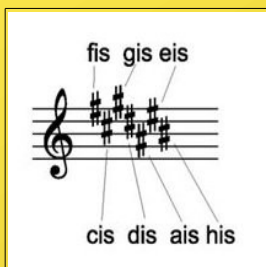
As dur 4b (b, es, as, des)

Des dur 5b (b, es, as, des, ges)

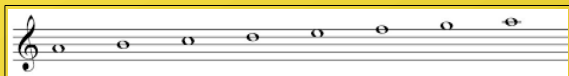
Ges dur 6b (b, es, as, des, ges, ces)

Ces dur 7b (b, es, as, des, ges, ces, fes)

MOLOVÉ STUPNICE S KRÍŽIKMI



a mol (základná molová stupnica)



- e mol 1# (fis)
- h mol 2# (fis, cis)
- fis mol 3# (fis, cis, gis)
- cis mol 4# (fis, cis, gis, dis)
- gis mol 5# (fis, cis, gis, dis, ais)
- dis mol 6# (fis, cis, gis, dis, ais, eis)
- ais mol 7# (fis, cis, gis, dis, ais, eis, his)

MOLOVÉ STUPNICE S BÉČKAMI



- a mol
- d mol 1b (b)
- g mol 2b (b, es)
- c mol 3b (b, es, as)
- f mol 4b (b, es, as, des)
- b mol 5b (b, es, as, des, ges)
- es mol 6b (b, es, as, des, ges, ces)
- as mol 7b (b, es, as, des, ges, ces, fes)